

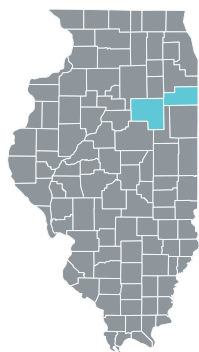
Heritage Prairie Renewable

FACT SHEET
APRIL 2021

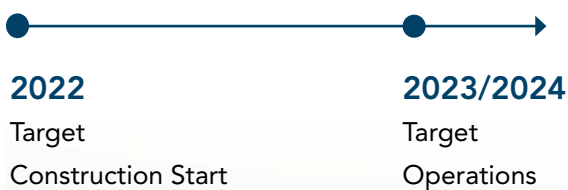
Heritage Prairie Renewable is a wind and solar development jointly developed by Pattern Energy and ConnectGen, that will provide economic benefits and jobs that will last generations. The Heritage Prairie Wind project will be located in western Kankakee County and north-eastern Livingston County. The Heritage Prairie Solar project will be located east of the Village of Essex in Kankakee County.

We believe the best way to build successful facilities is to work closely with local residents in a way that respects their culture and fits the needs of the communities that host us.

We prioritize relationship-building and open communication, we aim to engage local communities, address and incorporate feedback, and further local benefits.



Projected Schedule



Community Benefits

We believe in building opportunity through long-term local partnerships that benefit communities.

Landowner Payments

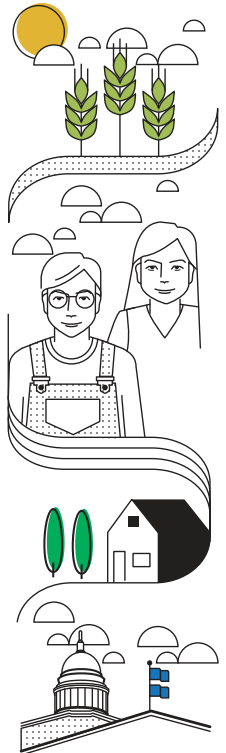
Generates over \$200M in payments to landowners over the project life.

Community Revenue

Provides an estimated \$6.8M per year to local communities, totaling \$214M over the projected facility life. More than 50% of the revenue will go to area school districts. The stable, long-term revenue will directly contribute to education, community services, roads, and first responder capabilities.

Economic Investment

Represents a projected investment of roughly \$1B in Illinois.



Job Creation

The project will inject millions of dollars into the economy, while utilizing local companies, services, materials, and creating local jobs.

Construction Jobs

800 - 1,000 wind construction jobs and 300 - 400 solar construction jobs including heavy equipment operators, electricians, laborers, and others

Full-Time Local Jobs

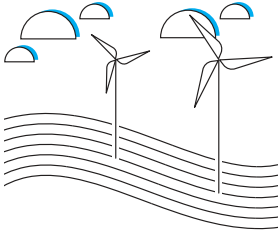
10 - 12 jobs and 2 - 4 jobs to operate and maintain the wind facility and solar facility respectively



HeritagePrairieRenewable.com



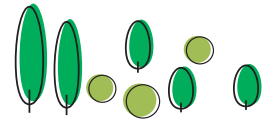
Harvesting the Wind and Sun



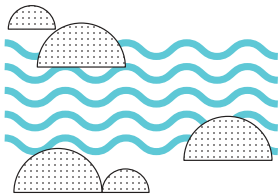
Heritage Prairie is being designed as a 500 - 600 MW wind facility and a 300 MW solar facility.



It will provide safe, affordable, renewable electricity equal to the needs of more than 530,000 average Americans annually.



Avoids more than 2M metric tons of CO2 every year, equal to nearly 500,000 cars. *



Conserves enough freshwater annually to meet the needs of 37,000 people. *

*when compared to coal-fired generation



Pattern Energy

Pattern Energy is one of the world's largest private renewable energy companies, with a global footprint and proven track record achieved through local and intentional engagement and support in the communities where we have a presence.

Headquartered in the United States, Pattern Energy is in the business of building opportunity and that work starts with listening to local communities, developing relationships on the ground, and tailoring benefit programs to each community.

Founded in 2009, our team is responsible for more than 30 utility-scale renewable energy facilities worldwide, our business is guided by commitments to safety, serving our customers, protecting the environment, strengthening communities, and creating shared value.

ConnectGen

ConnectGen is an independent renewable energy company focused on developing renewable generation and energy storage projects across North America. ConnectGen's portfolio consists of renewable energy generation projects, including solar, wind, and storage, as well as transmission infrastructure that will dramatically increase America's supply of low-cost clean energy.

Our team includes highly regarded professionals in the energy industry who have developed, financed, constructed, and operated large-scale renewable energy and infrastructure projects across the United States. ConnectGen is backed by Quantum Energy Partners. Founded in 1998, Quantum Energy Partners is a leading provider of private equity capital to the global energy industry, having managed together with its affiliates more than \$16 billion in equity commitments since inception.